

ADJUSTING OF MVVS RC CARBURETTERS No: 3215, 3216, 3219, 3226

- Use the pressured tank with pressure inlet from the silencer.
- Connect the fuel line to the carburetor and the tank pressure line to the silencer.
- Check the tank and pressure lines. The lines must be perfectly leak-proof.
- Check the glow plug and screw it carefully to the cylinder head.

Open the fuel needle 2 :1,5 turns.

Screw in the idle needle 1 so far that the gap between it and the nut is 1,2 mm (0,05 inch) : see picture.

Set the slide valve to the full opened position.

Close the carburetor with the finger and turn the propeller 5 times in order to prepare rich mixture for start.

Open the slide valve 2mm (0,08 inch) from closed position.

Connect the glow drivers to the glow plug and with energetic switch or by starter turn the propeller.

Repeat the starting until the engine will run.

Slowly open the slide valve to the full opened position and let the engine warm up for cca 20 seconds. Disconnect the glow drivers. Tune the engine to the top speed with the fuel needle : close the needle step by step for 1/8 turn and wait for the change the speed. As soon as engine run on the top speed, turn the needle for 1/8 turn back. The right setting is reached, if the top speed is slightly lower as maximal.

Set the valve opening to 1/3. Hold the pull rod and set the idle needle until the RpM are steady.

Set the speed at idle. If the idle speed drop - the mixture is too rich. Lean the mixture by inscrew the idle needle for 1/8 - 1/4 turn.

Open the slide valve and let the engine clean for 5 seconds.

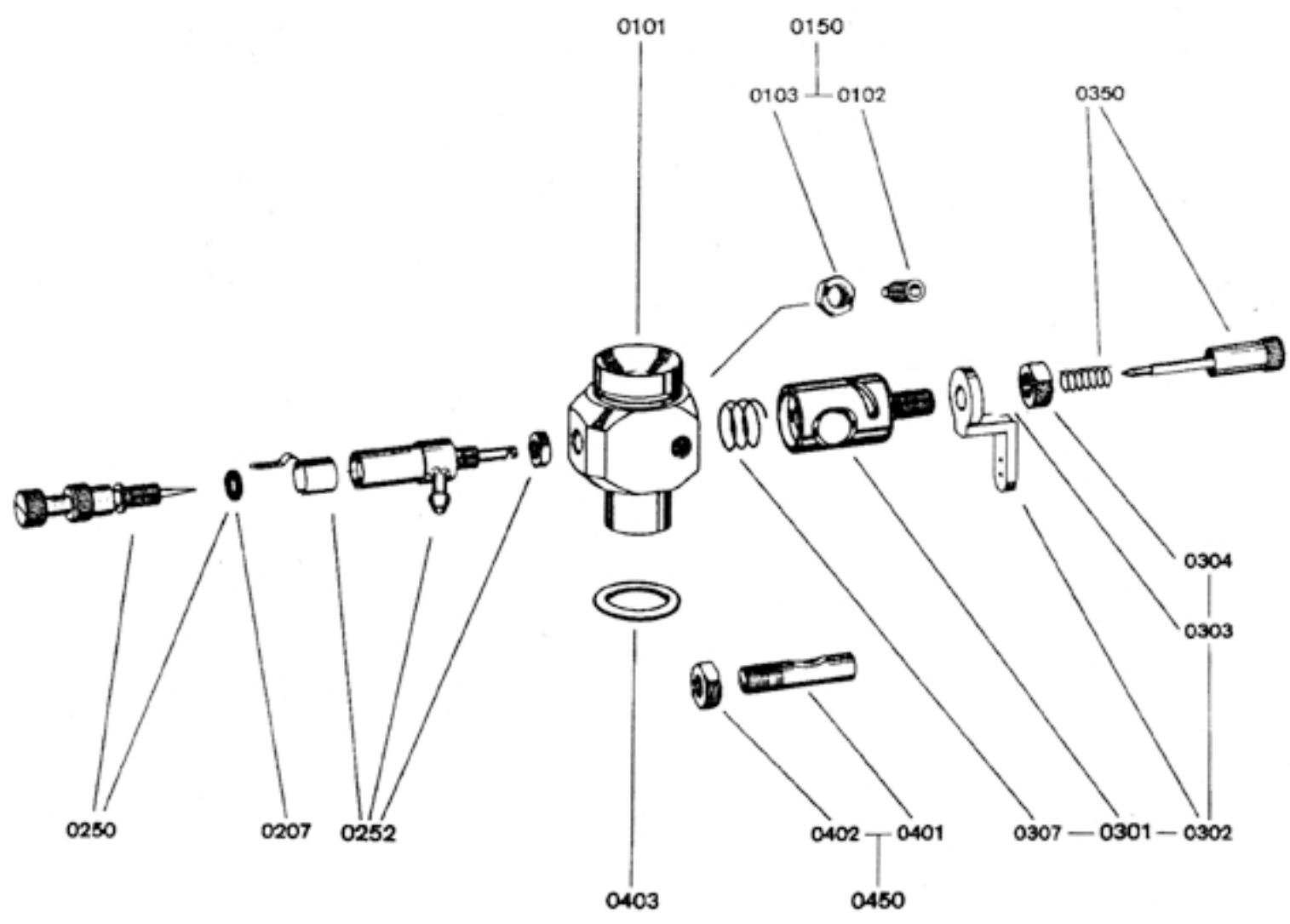
Close the slide valve to the idle position. If the idle speed drop repeat the same procedure.

The right idle seting is reached once the speed by closing the slide valve drop and then slightly rise and then stay constant.

Check the transition from idle to the high speed: If by the transition engine turn off, the mixture is too lean - rich the mixture by unscrew the idle needle for 1/8 - 1/4 turn.

Carburetor setting is right if past opening the slide valve engine smoothly accelerate to the top speed.

Do not change the position of the nozzle !



Náhradní díly karburátoru (Carburetter spare parts) :

Těleso karburátoru	Carburetter body	0101	Páka šoupátka	Slide valve lever	0302
Stavěcí šroub šoupátka	Slide valve lead screw	0150	Volnoběžná jehla	Idle needle assembly	0350
Šroub volnoběhu	Idle-adjusting screw	0104	Těsnící kroužek	Sealing ring	0403
Těsnící kroužek trysky	Nozzle sealing ring	0207	Pojistný svorník	Retaining bolt	0450
Tryska kompletní	Nozzle assembly	0252	Pojistná pružina	Retaining spring	1211
Palivová jehla	Fuel needle	0250	Příruba karburátoru	Carburetter flange	0453
Šoupátko	Slide valve	0301			

